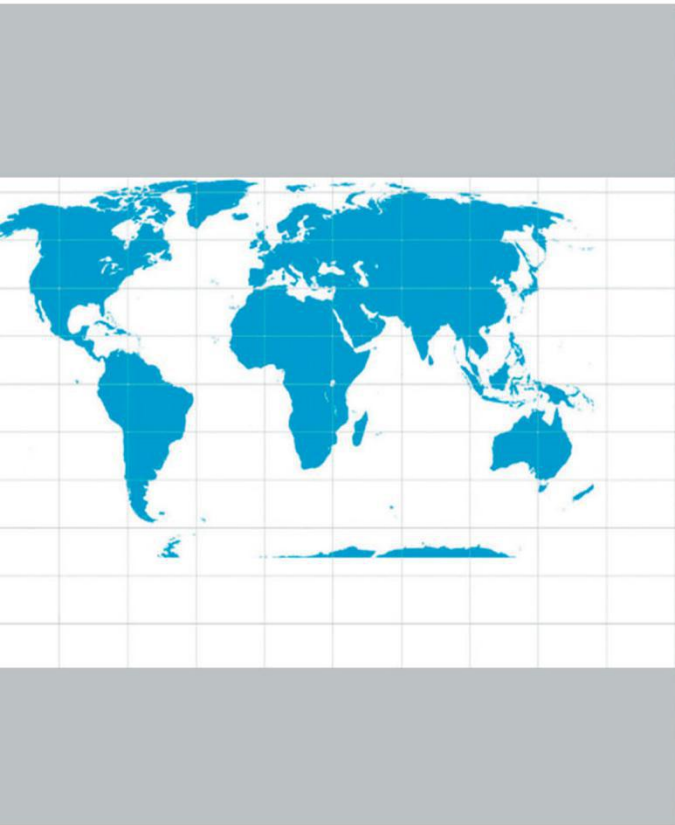


# Bed Head Unit



---

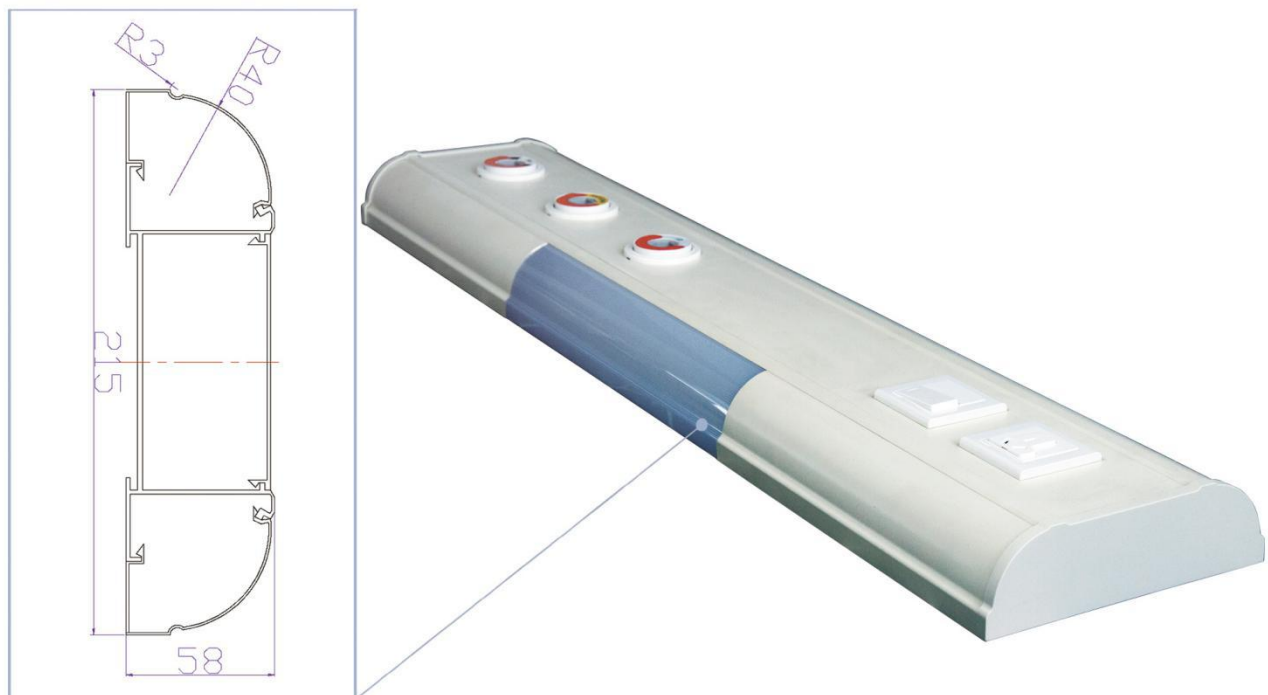
## Product manual

Shanghai Zhenghua Medical Equipment Co., Ltd

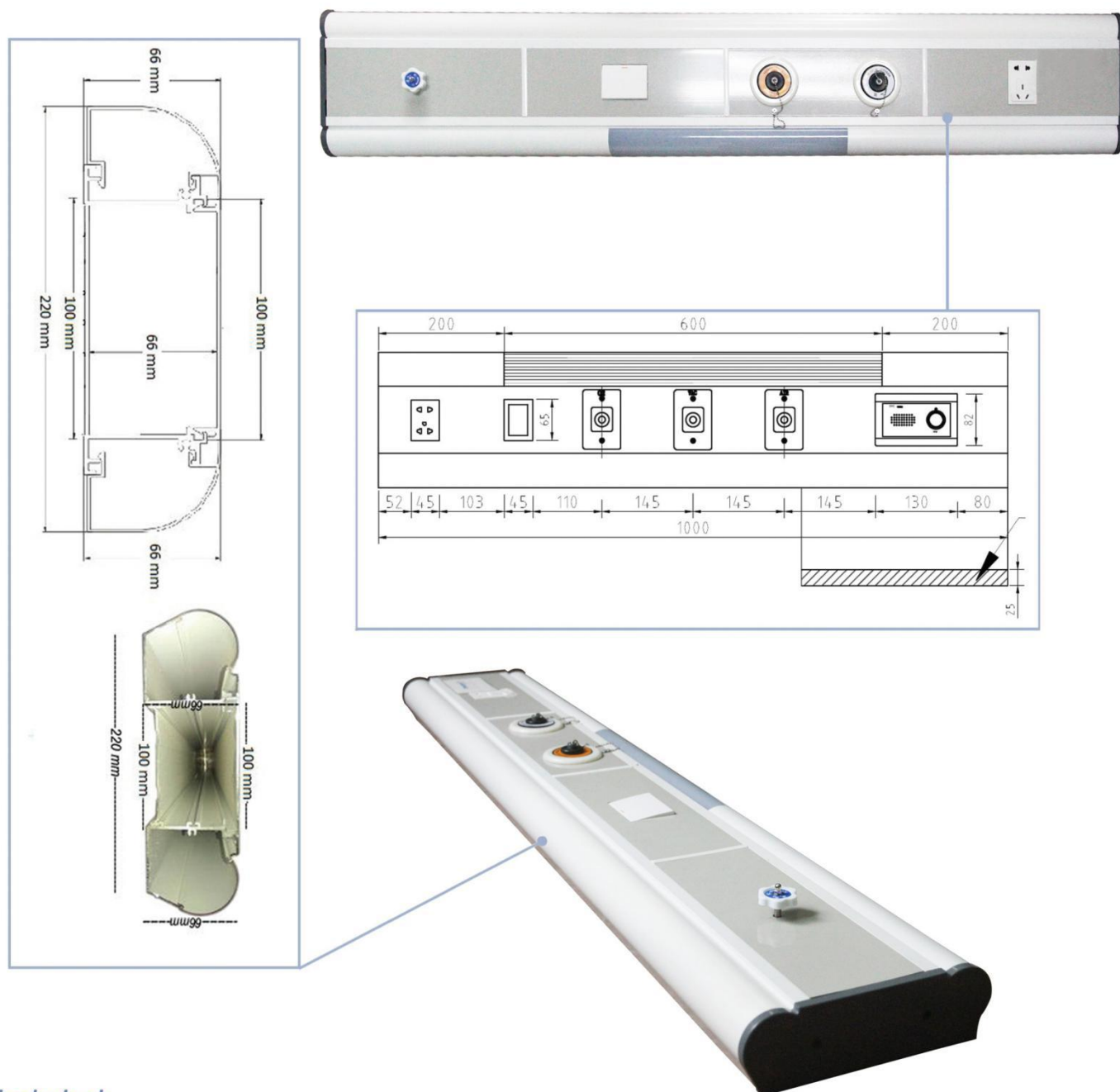
## MODULAR STRUCTURE

- Adjustable length
- Expandable and upgradeable
- Hygienic surfaces, the surface adopt electrostatic powder coating with static dust,
- Flexible positioning of gas terminal units and electronic connections
- Variety of integrated light options to choose from
- Many model for your choose
- Front panels can be opened, easy to maintenance work
- Security, inside of panel, the unit is divided into several passages by an aluminum barrier.
- extruded aluminum profiles. The length can be freely configured up to a maximum of 6 m.
- For Intensive Care Units, Recovery Rooms and Wards

### Model 1: BH-MEX005



## Model 2: BH-CTR001



### Technical:

**Material:** aluminum alloy

**Dimension:** 183(W) mm x 66(D) mm, length defined by customer

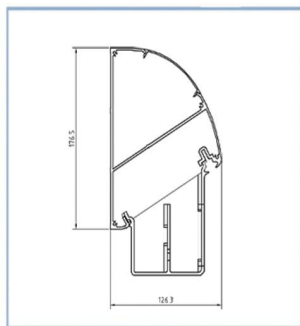
Middle panel width is 100mm

**Standard color:** both side is white, middle is gray

**Light:** top and down can install light, for your choose

Medical rail is optional

## Model 3: BH-MEX001



### Technical:

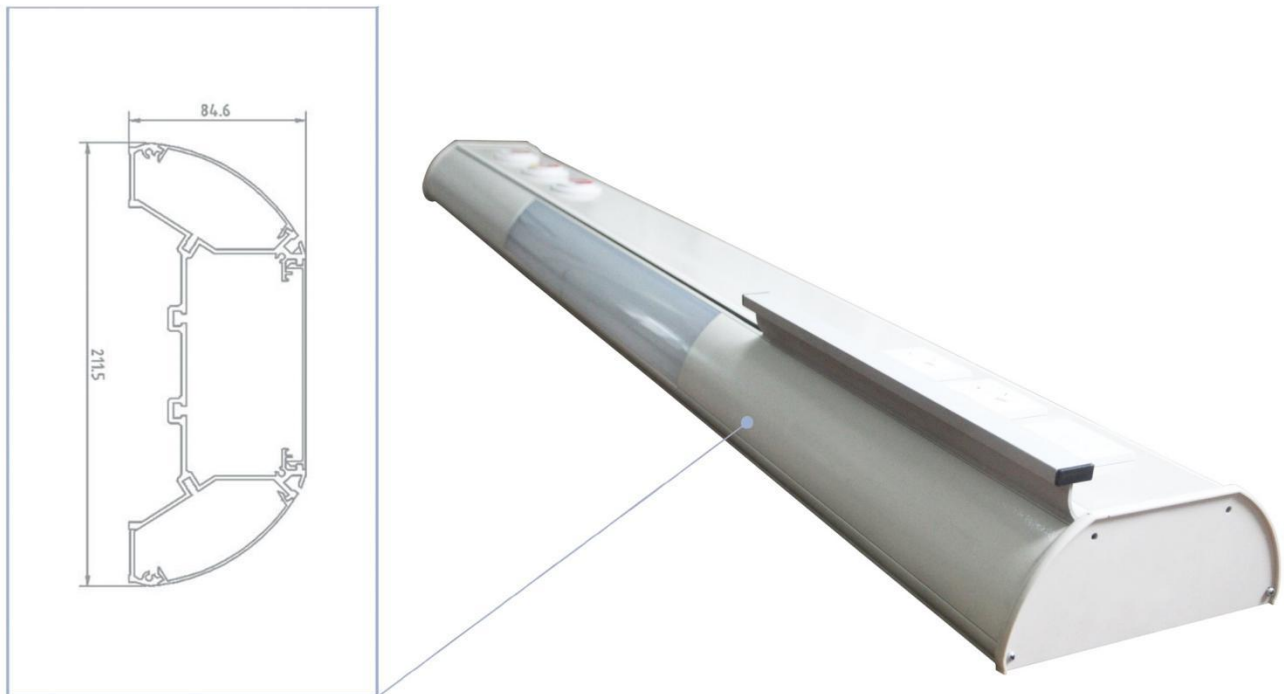
**Material:** aluminum alloy

**Dimension:** 176.5(W) mm 126.3(D) mm, length defined by customer

**Standard color:** white color, yellow is optional

**Light:** down can install light

## Model 4: BH-MEX002



### Technical:

**Material:** aluminum alloy

**Dimension:** 211.5(W) mm x 84.6(D) mm, length defined by customer

Middle panel width is 100mm

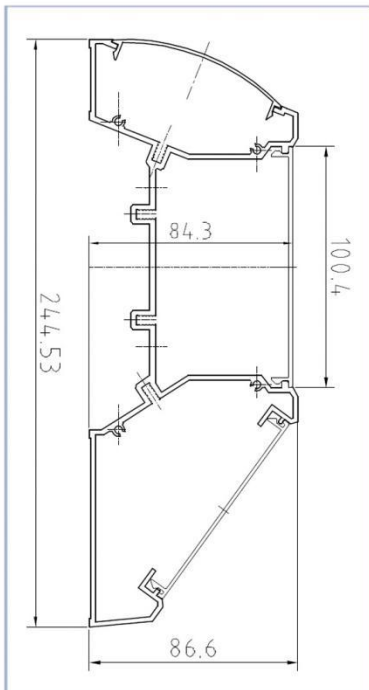
**Standard color:** both side is white, middle is gray

**Light:** top and down can install light, for your choose

Medical rail is optional



## Model 5: BH-MEX003



### Technical:

**Material:** aluminum alloy

**Dimension:** 244(W) mm x86(D) mm, length defined by customer

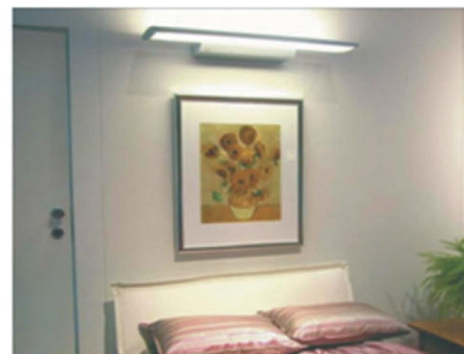
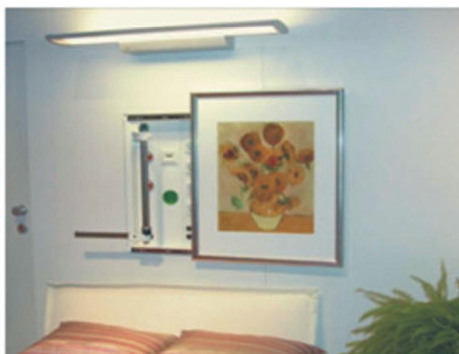
Middle panel width is 100mm

**Standard color:** white color, Middle is gray or white is optional

**Light:** down can install light Medical rail is optional

Monitor Bracket is optional

## Model 6: BH-AWB001



- Technical:**
- 1、 Push-pull murals can meet the health care functions, and achieve the overall room design at the same time.
  - 2、 The health care equipment at interior, covert design, effectively block dust and man-made pollution.
  - 3、 External mural design, with the overall design of furniture to create comfortable atmosphere for recovery.
  - 4、 Separation of gas and electricity, safe and reliable.
  - 5、 Profuse medical products and accessories, clients can customize

# Shanghai ZhengHua Medical Bed Head Unit



**Zhenghua - Medical**



Shanghai Zhenghua Medical Equipment Co., Ltd  
Shanghai Etar Mechanical and Electrical Technology Co.,Ltd

 : No 1188 ChuanSha Rd, PuDong District Shanghai City China  
No 38 GuAi Rd, PuDong District Shanghai City China

 : +86-21-58565566/ 58565533

 : +86-021-38923226

 : [www.zhenghua-mgss.net](http://www.zhenghua-mgss.net)

 : [admin@zhenghua-mgss.com](mailto:admin@zhenghua-mgss.com)